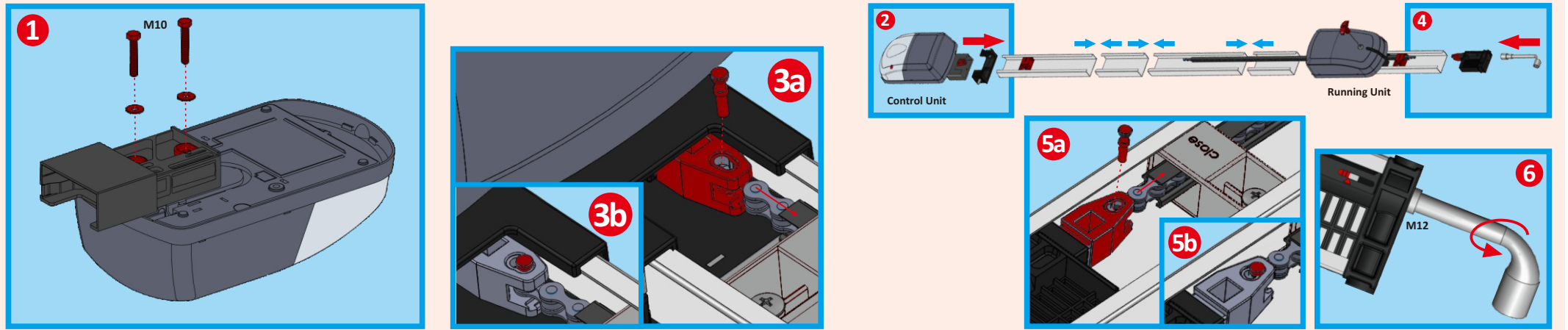
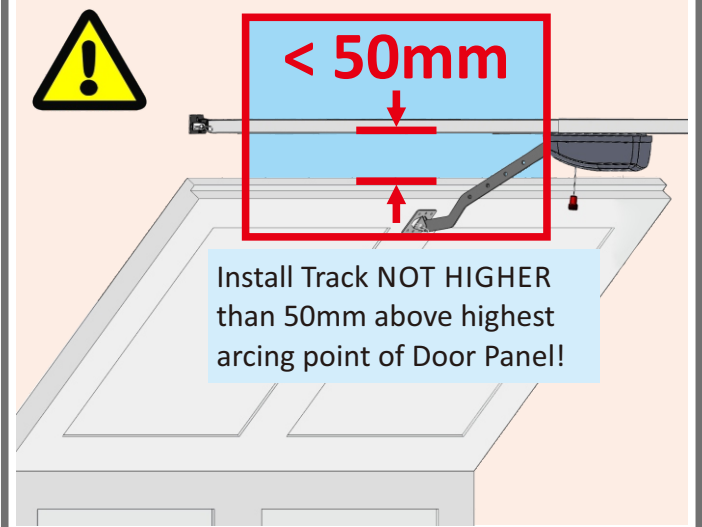
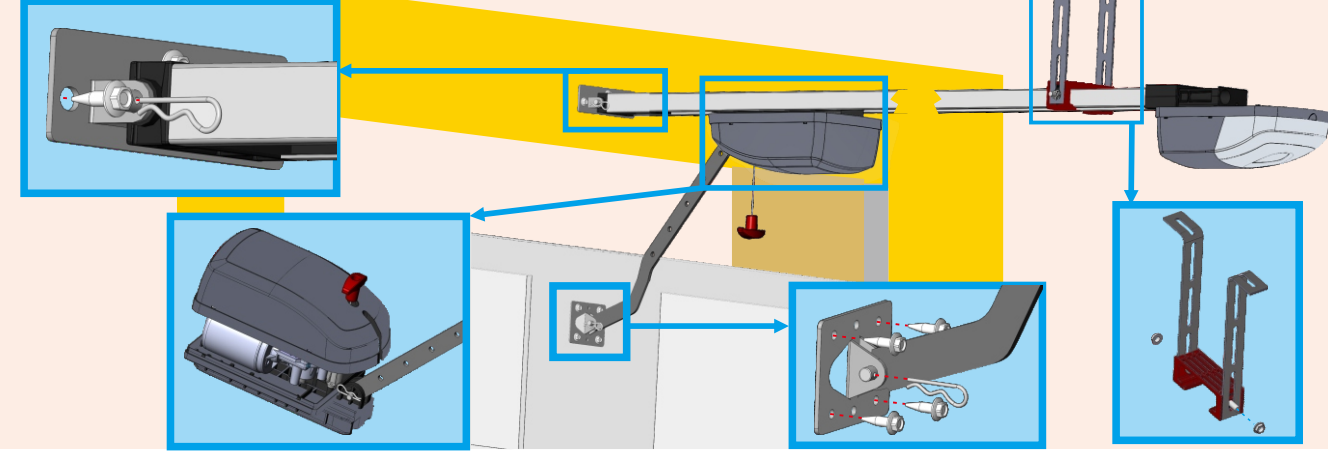


1 Assemble Rail, Mount Control Unit and Running Unit, Tension Chain

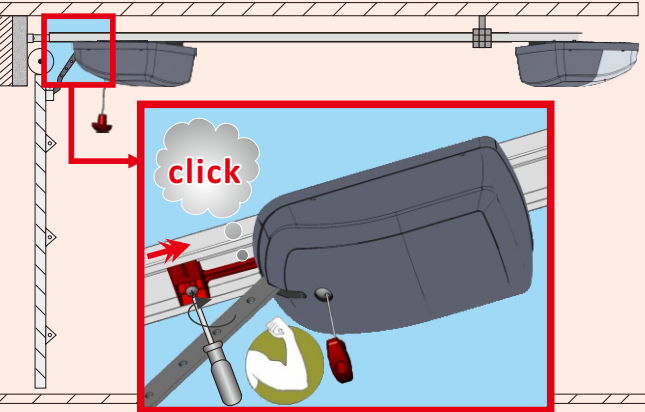


2 Mount Brackets and Rail

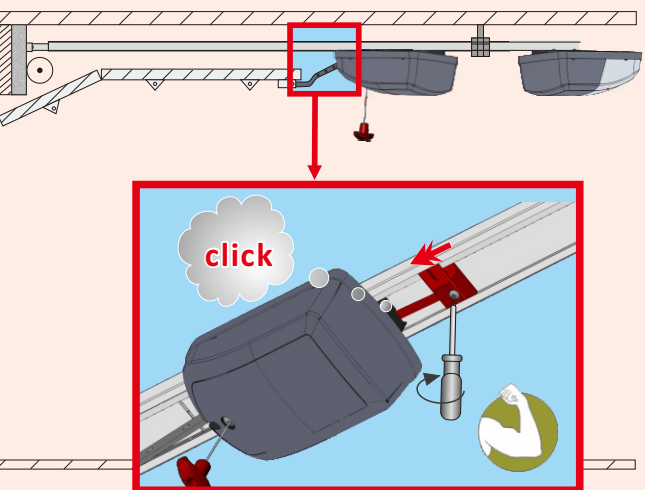


3 Position Close/Open Stopper

CLOSE the Door by hand, then slide the Stopper as shown in drawing into the carriage until "click" is heard. Then firmly tighten the lock screw.

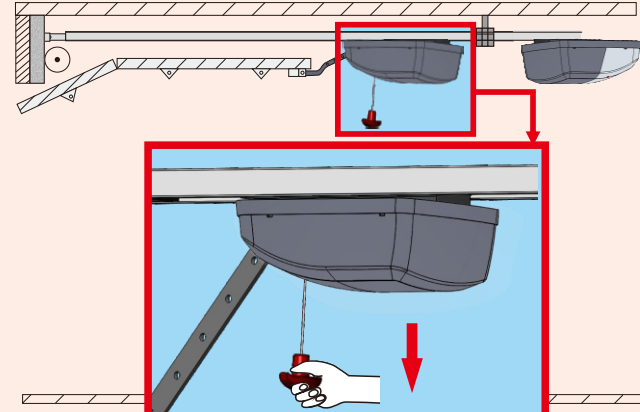


OPEN the Door by hand, then slide the Stopper as shown in drawing into the carriage until "click" is heard. Then firmly tighten the lock screw.

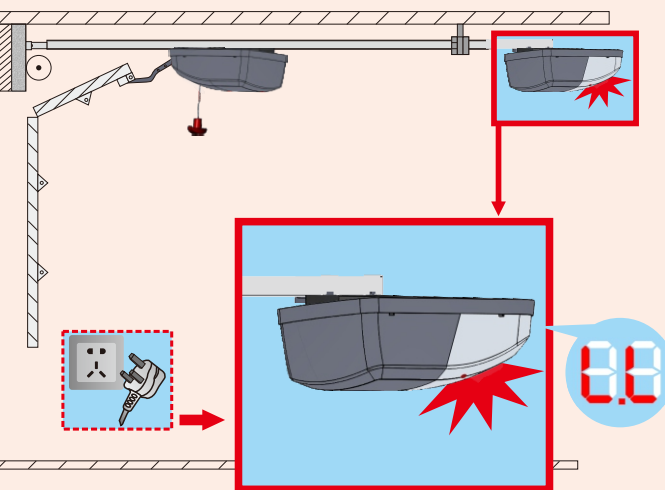


4 Engage Running Unit, Connet to Power Supply

Pull Release Lever and make sure Running Unit is engaged.

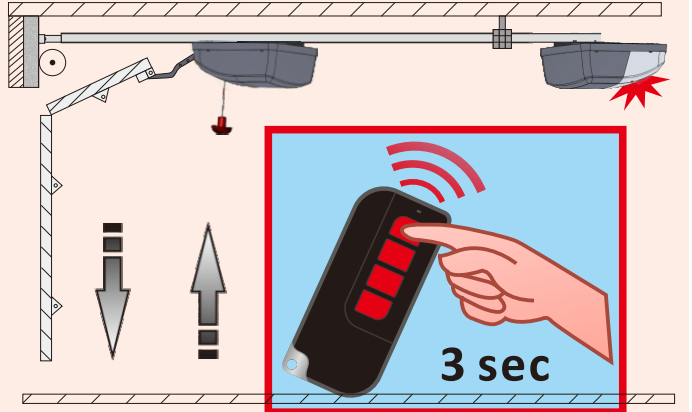


Connect to Power Supply. Courtesy Light begins to flash. is shown in Display.



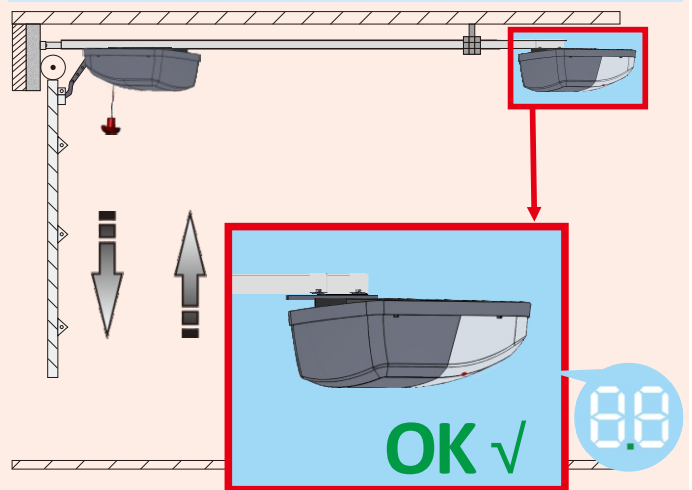
5 Learning Travel & Force

Long Press Transmitter Button 1 for 3 seconds until Light Fast Flashes.
1.) Door will **AUTOMATICALLY RUN TWO (2) Complete Cycles** ...



... (Close, Open, Close, Open) and then Stop in Open Position.

Learning Complete when Blinking and extinguishes.



F Trouble Shooting

In case of an unusual incident, the Courtesy LED light triple flashes, and an Error Code is displayed as below:

1.) Safety Photo Beam obstructed by Obstacle.	1.) Remove Obstacle.	1.) Safety Photo Beam malfunctioning or not installed correctly.	2.) Replace Malfunctioning Device or check Installation.	1.) Safety Contact Strip obstructed by Obstacle.	1.) Remove Obstacle.	1.) Safety Photo Beam not installed, but Safety Photo Beam Function enabled.	3.) Install Safety Photo Beam or disable Safety Photo Beam Function.	1.) Safety Contact Strip malfunctioning or not installed correctly.	2.) Replace Malfunctioning Device or check Installation.	1.) Safety Contact Strip not installed, but Safety Contact Strip Function enabled.	3.) Install Safety Contact Strip or disable Safety Contact Strip Function.
Door imbalanced when Function enabled.	1.) Adjust door balance.	Maximum Run Time Exceeded.	2.) Turn off function (be aware of the Risks involved).	During Learn or Re-Learn of Force Values : Door Hit an Obstruction or Exceeded Set Safety Offset Values.	1.) Check and clear reason that causes the opener exceeding Run Time.	2.) Engage emergency release.	3.) Adjust run time from 30 sec to 60 sec. by function see .	1.) Set Safety Offset Values higher 1.	2.) Adjust Door Balance and Door Installation.	3.) Choose a more powerful Opener Model.	1.) Remove Obstacle.
Door hit an Obstacle during Open or Close movement.	1.) Door hit an Obstacle during Open or Close movement.	Door in improper shape.	2.) Door in improper shape.	Same as .	same as .						

G Fine Tune Safety Offset Value

Safety Offset Value determines how easily the door Safety Reverses/Safety Stops when hitting an obstruction. In order to prevent "ghosting" on a big, badly sprung or worn, out door, Safety Value needs to be set to a **higher value** (max.= 5). In order to achieve a more sensitive Safety Reversing, Safety Offset Value needs to be set to a **lower value** (min.= 1). Safety Offset Values can be fine tuned **at any time**.

Fine Tune Safety Offset Value

- At any time, Press or . The current Safety Offset Value is shown.
- Press to increase or to decrease the Value, being the most sensitive being the least sensitive value.
- To confirm new Safety Offset Value press .
- To leave without changes wait 10 seconds or press .